

Appendix

Figure 1. A drawing by a woman of the little manor in which she lived in an Asian country. The upper right-hand corner contains “*la cage des singes* [the cage of monkeys].” The upper left-hand corner contains a description of “*roses grimpauter* [sic] [climbing roses] all around the pavillion.” On the left-hand margin is a description of “*le sous bois* [the trees growing under trees] caliptus [sic] trees.” At the lower border of the drawing is a description of *la route* [the road] above which are designations for *fleurs* [flowers]. The rooms of the edifice are labeled from the left as follows: *salon* [parlor], *chemine provansale* [fireplace in the style of Provence], *boudoir* [her private sitting room], *ma chambre* [my bedroom] + *salle de bain* [bathroom].

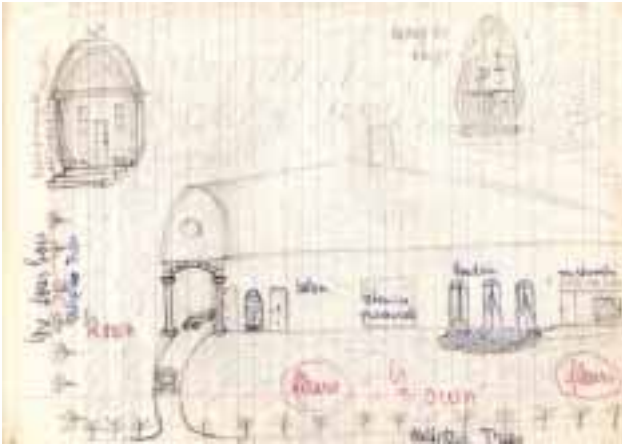


Figure 2. A drawing apparently from her ninth decade illustrating a scene from an estate of her employer in western North America



Figure 3.



Figure 4.



Figure 5.



Figure 6.

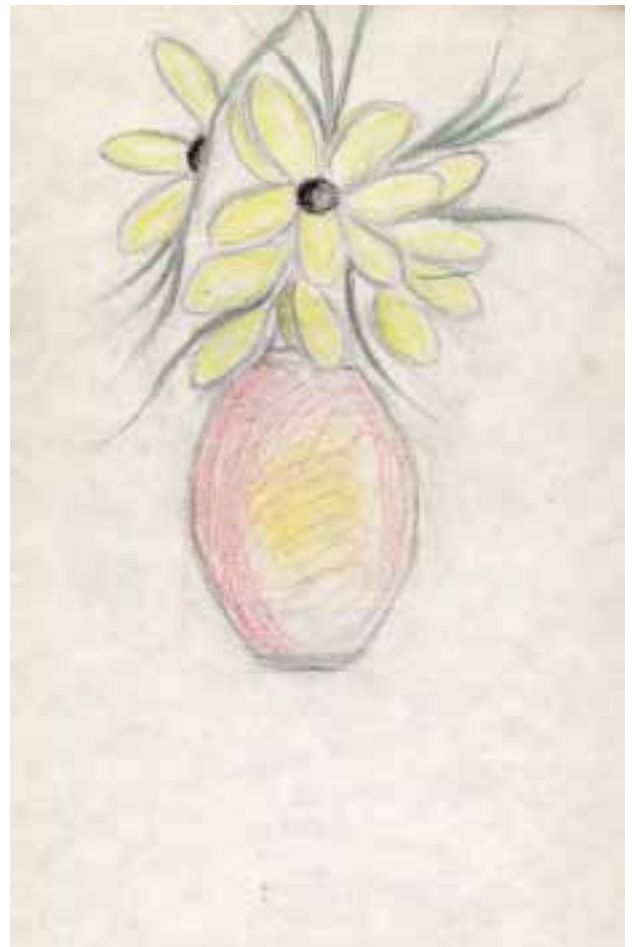


Figure 7



Figure 8.



Figure 9



Figure 10.



Figure 11.



Figure 12.



Figure 13.



Figure 14.



Figure 15.



Figure 17.



Figure 16.



Figure 18.



Figure 19.



Figure 21.



Figure 20. "Palm on the Ocean"



Figure 22.

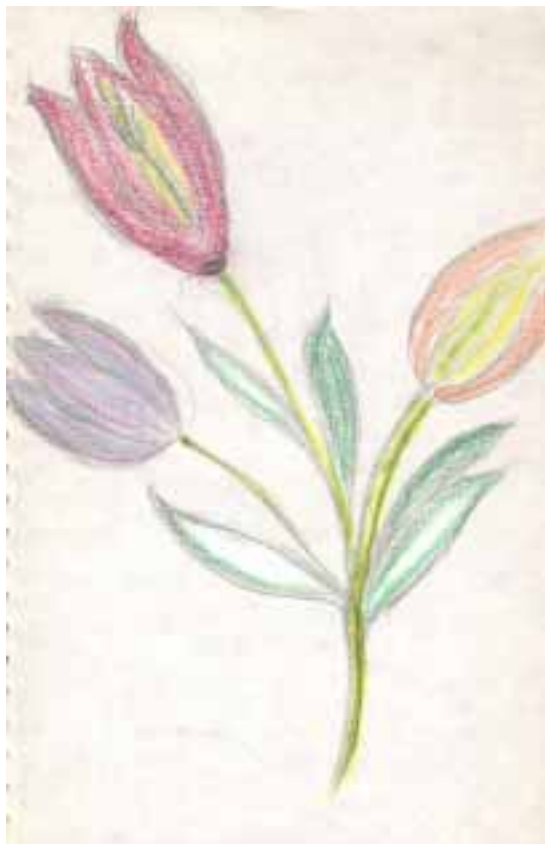


Figure 23.



Figure 25.



Figure 24.



Figure 26.



Figure 27.



Figure 28.



Figure 29.



Figure 30.



Figure 31.



Figure 33.



Figure 32.

